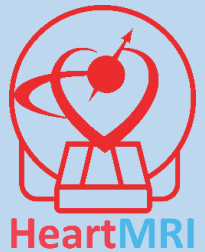


Stress MRI



Images from an MRI can help your doctor understand if there are issues with your heart

SYMPTOMS AND DESCRIPTION

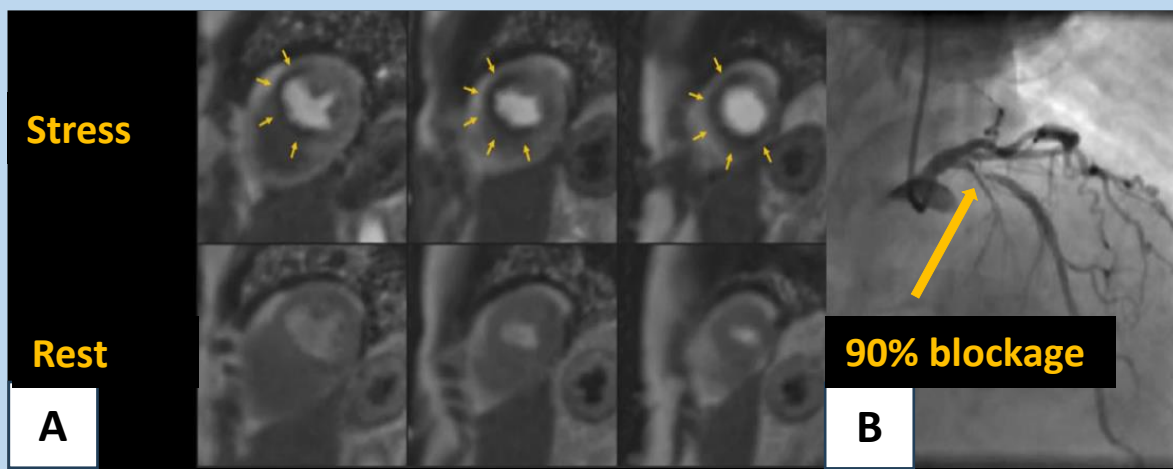
Symptoms include: Pain in the chest and/or jaw, neck, arm, back or stomach, as well as shortness of breath, nausea, dizziness and cold sweats.

Description: This stress test is performed in an MRI scanner to see if there are blockages in the blood supply to the heart (coronary arteries). A medication is given through an IV to help detect blockages.

WHY MRI

Heart MRI does not require radiation. The results help your doctor decide whether or not you need a coronary angiogram (where a catheter will be used to look for blockages) and treatment with stents or surgery.

IMAGES



An abnormal stress MRI is shown in A. This was due to a 90% blockage in the main vessel (LAD artery), as shown in the coronary angiogram in B and was fixed with a stent.

Ask your doctor about:
Stress Cardiac MRI with contrast

*Images provided courtesy of: Kana Fujikura, MD, MPH
Created by: Kana Fujikura, MD, MPH, Jennifer Jordan, PhD, and Kanae Mukai, MD.*