

# Aortic Disease



Images from an MRI can help your doctor understand if there are issues with your heart

## SYMPTOMS AND DESCRIPTION

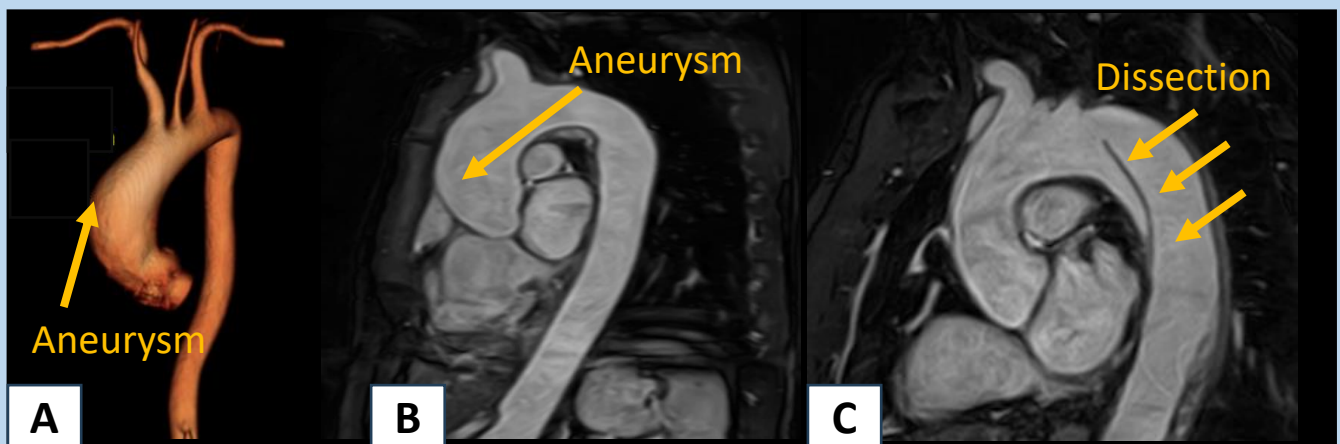
**Symptoms:** In most cases, there are no symptoms. However, in emergency situations where there is a tear in the aorta (dissection), you can feel a sudden sharp pain in the chest, abdomen and back and have pain or a cool sensation in the arms or legs.

**Description:** This is a disease affecting the aorta, which is the main vessel supplying the blood to your body, from head to toe.

## WHY MRI

Angiogram using an MRI (MR angiogram) is an accurate test for measuring your aorta. Unlike a CT scan, there is no radiation.

## IMAGES



Aortic aneurysm with ballooning of the aorta (orange arrow) is shown in A and B. The line in the aorta in C is due to a dissection or tear (orange arrows) which needs immediate medical attention. B and C are non-contrast scans.

Ask your doctor about:  
Chest MRA with contrast  
or  
Chest MRA without contrast

*Images provided courtesy of: Sihong Huang, MD and Kanae Mukai, MD.  
Created by: Kanae Mukai, MD.*