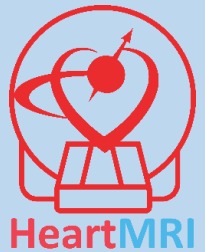


Cardiac Sarcoidosis



Images from an MRI can help your doctor understand if there are issues with your heart

SYMPTOMS AND DESCRIPTION

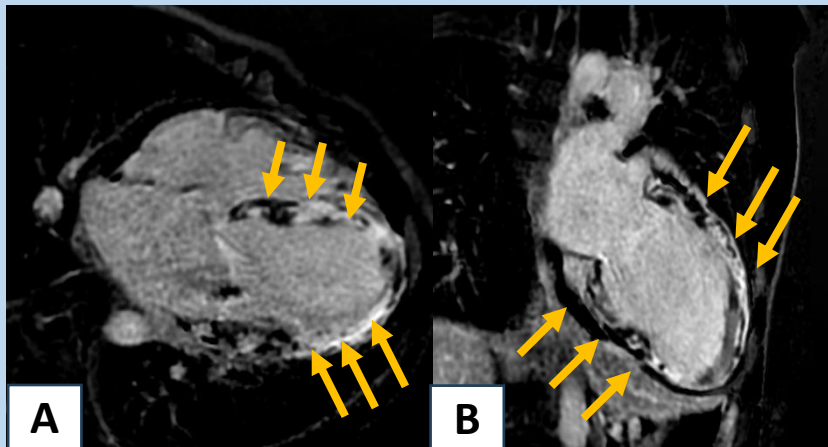
Symptoms include: Shortness of breath, cough, skipped beats, chest pain, weight loss, tiredness, fever, poor appetite, unintentional weight loss, and skin rashes.

Description: This disease is caused by tiny clusters of inflammatory cells (granulomas) which develop in in different tissues throughout the body, including the heart.

WHY MRI

Heart MRI is one of the best ways to check if your heart is involved and if it is, measure how much muscle is affected. After you receive treatment, your doctor can check your response with another MRI scan and adjust your medications accordingly.

IMAGES



The white areas (orange arrows) in A and B are abnormal heart tissue affected by sarcoidosis.

Ask your doctor about:
Cardiac MRI with contrast

*Images provided courtesy of: Michael Gannon, MD.
Created by: Michael Gannon, MD and Kanae Mukai, MD.*