

Coronary Artery Disease



Images from an MRI can help your doctor understand if there are issues with your heart

SYMPTOMS AND DESCRIPTION

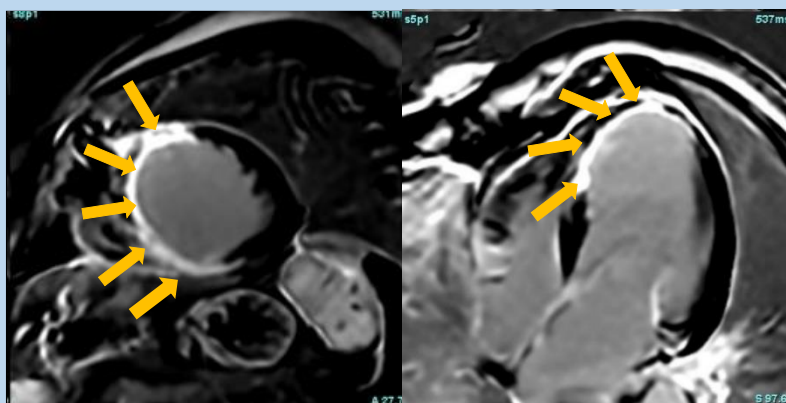
Symptoms include: Pain in the chest and/or jaw, neck, arm, back or stomach, as well as shortness of breath, nausea, dizziness and cold sweats.

Description: This disease is due to blockages in the blood supply to the heart (coronary arteries).

WHY MRI

Heart MRI is a very sensitive tool for finding damage in your heart muscle due to blocked coronary arteries, which can lead to heart failure and rhythm issues. Your doctor can adjust your treatment and refer you to procedures to restore blood flow based on information on the scan.

IMAGES



MRI finds damaged heart muscle. The orange arrows show scar from a heart attack.

Ask your doctor about:
Cardiac MRI with contrast

*Images provided courtesy of: Vidya Nadig, MD.
Created by: Vidya Nadig, MD and Michael Klein, MD.*